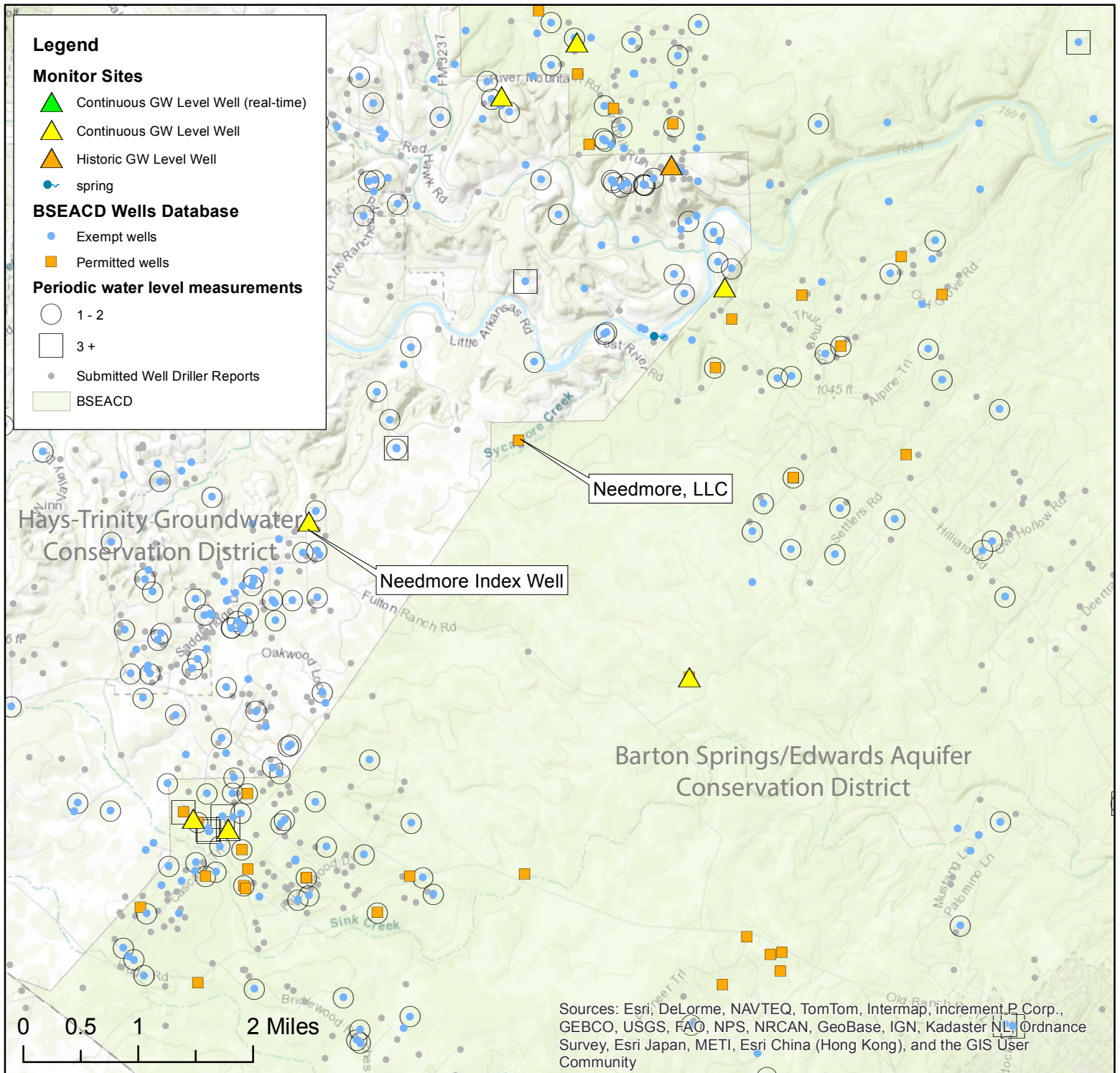


BSEACD Wells Database and Water Level Sites



Basedata: Submitted Well Drillers Reports from Texas Water Development Board, Monitor Sites compiled from HTGCD, BSEACD, TWDB, and USGS groundwater monitoring sites, BSEACD wells database with exempt domestic wells and non-exempt, permitted wells. Water levels taken during BSEACD programs such as the Neighborhood Site Visits. The BSEACD stores water level measurements in several databases and this map presents data from the Wells database. Additional water level data is available but not readily displayed.

Barton Springs/Edwards Aquifer Conservation District (BSEACD), August 2019

Disclaimer: This map is for graphic display purposes only. It is not intended for engineering, surveying or construction purposes. The information depicted has been digitized from various sources and only represents the relational accuracy of design elements. The Barton Springs/Edwards Aquifer Conservation District is not responsible for the use, display or interpretation of this map by any other person, agency or organization.