

Travis County ILA Update

Southwestern Travis County Hydrogeology Study

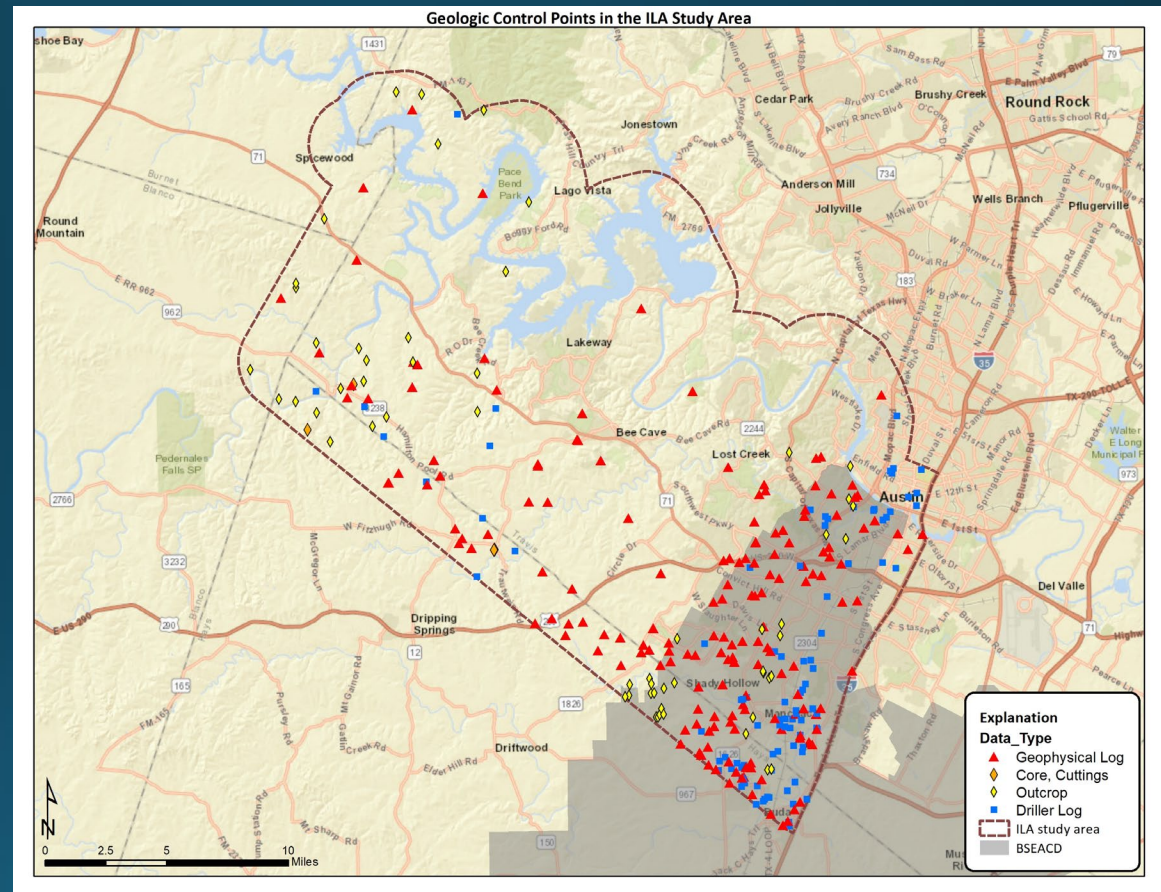


Scope of Study

- Characterize groundwater resources in southwestern Travis County
 - Collect geologic and hydrogeologic data
 - Compile well information
- Provide educational and technical information to the public
 - Digital databases of information
 - Publications and presentations
- Assist future management efforts
 - Estimate current and future groundwater demand

Geologic Data

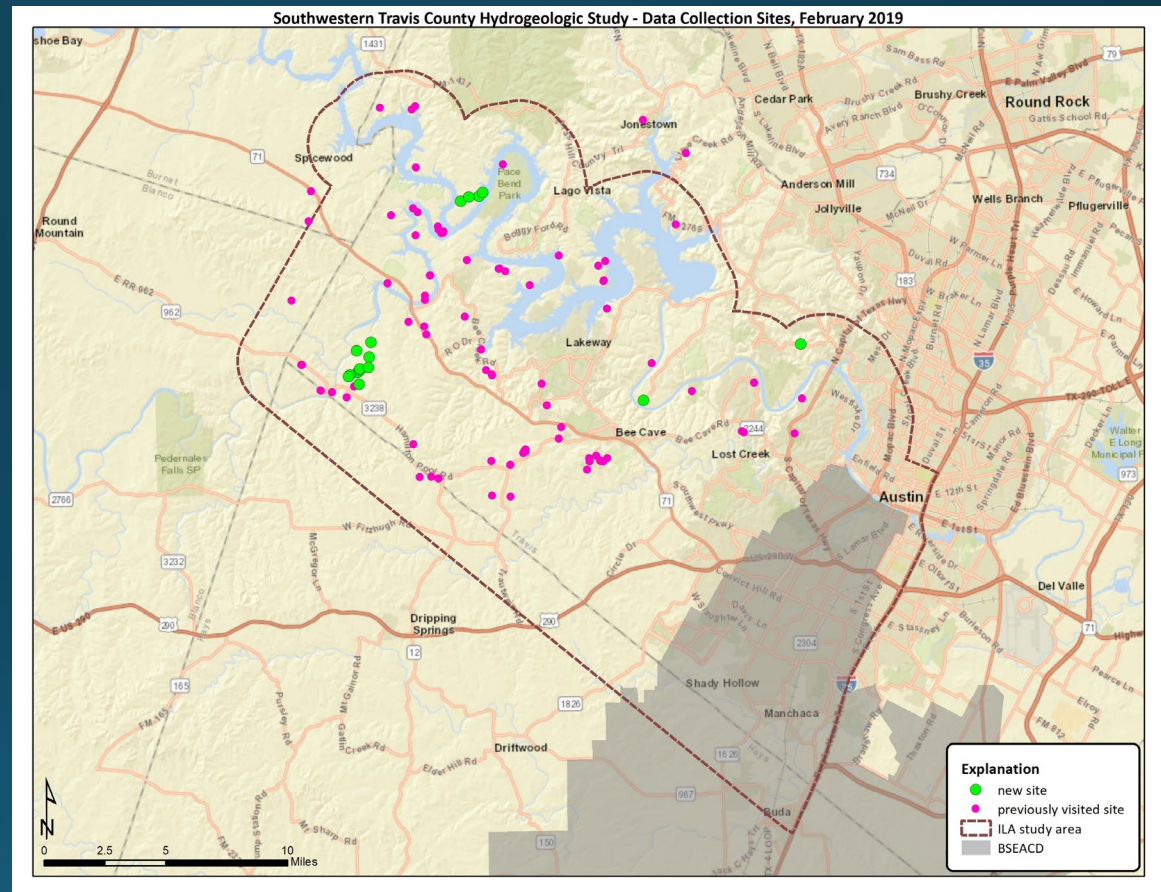
- Data types
 - Geophysical logs
 - Core and cuttings samples
 - Geologic outcrops
 - Driller logs
- Provide information about the location and elevation of geologic formations
- Used in combination with hydrogeologic data to characterize groundwater resources



Hydrogeologic Data

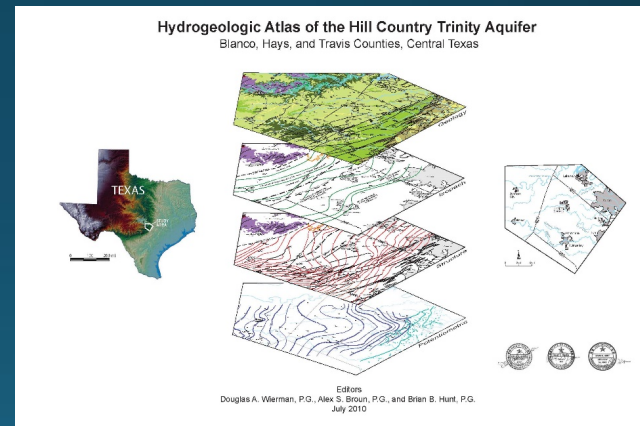
Data types

- Water level data
- Chemistry data
- Aquifer tests
- Well information

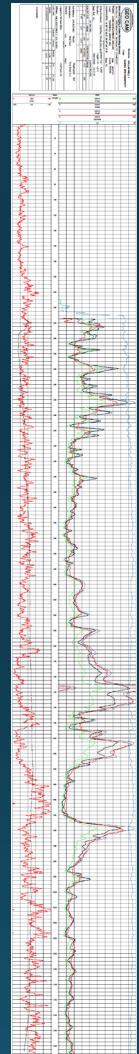


Next Steps

- Continue data compilation & collection
- Install weather station at Westcave Preserve
- Install monitoring equipment at select wells
- Develop new educational resources for well owners
- Begin data analysis, key project deliverables



Model and example from 2010 Atlas



Questions?

lcockrell@bseacd.org



Geologic control points in the study area

Data Type	BSEACD	Outside District	Total
Geophysical log	109	67	176
Core, Cuttings	0	4	4
Geologic outcrop	28	30	58
Driller log	77	20	97

Submitted Drillers Reports in the study area

Proposed Use	# of wells in study area
Domestic	2553
Irrigation	775
Monitor	821
Public Supply	56
Industrial	3
Other – test, stock, geothermal, injection, env. soil boring	1385
Total	5593