



Tweet

Share this Page: 



Friday, July 8, 2016

Subscribe to Aquifer eNews: [Click here.](#)



Barton Springs/Edwards Aquifer Conservation District

Director Elections in November 2016

A five-member Board of Directors, elected for staggered four-year terms, is the governing body of the District and ensures the District's work is consistent with the statutory mission, District rules, and local priorities. Directors are elected in the November general elections of even-numbered years (starting in 2012) by the registered voters in five single-member precincts. Very generally, there are two City of Austin urban precincts, one I-35 corridor urban precinct (with combined surface and groundwater supplies), and two rural precincts (one primarily Edwards Aquifer users, one primarily Trinity Aquifer users).

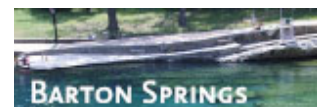
This November, elections will be held for Director Precincts 1, 3, and 4. Candidates will be able to pick up packets starting July 25. For more information on precincts, elections, and timeline, visit the District's [Board of Directors](#) page.

IN THIS ISSUE

- [Director Elections](#)
- [Blanco and Onion Flow Study](#)
- [DS Wastewater Permit](#)
- [Edwards Aquifer water levels](#)
- [Upcoming Events](#)

Current Drought Stage: **NO DROUGHT**

The District uses two drought triggers to manage pumping and coordinate conservation.



10-day avg flow: 114 cfs



Water level: 542ft above msl

[READ MORE](#)

STAY IN TOUCH



[Become a Facebook fan](#)



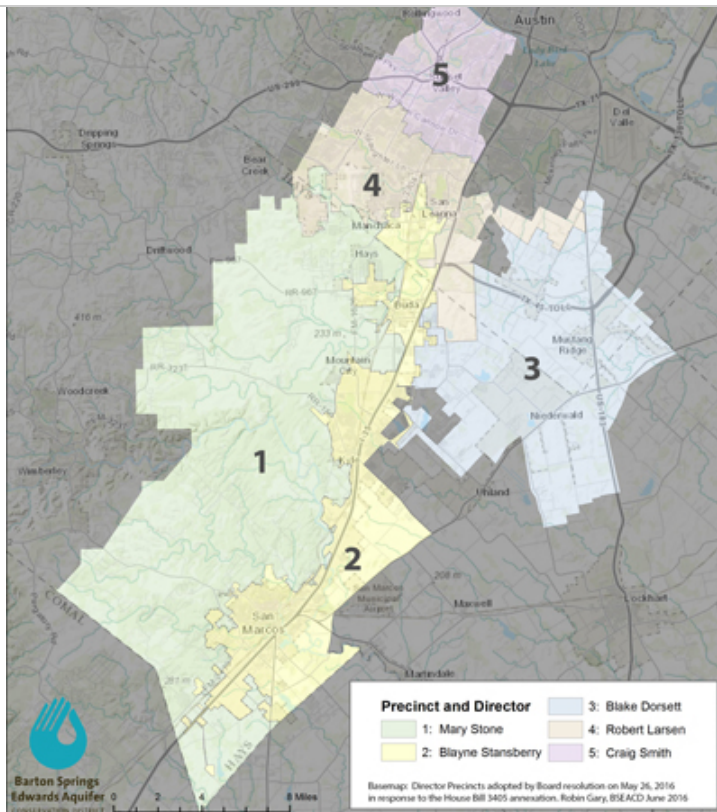
[Subscribe to our blog](#)



[Follow us on Twitter](#)



[Subscribe to Aquifer News](#)


[READ MORE](#)

Blanco River and Onion Creek Surface and Groundwater Study

The District, Hays Trinity Groundwater Conservation District, the Edwards Aquifer Authority and the City of Austin collaborated to measure flow along the Blanco River and Onion Creek to investigate and better understand surface and groundwater interactions. The Edwards and Trinity Aquifers provide critical water resources to Central Texas. Streams that create the beautiful Texas Hill Country are in fact hydrologically linked to the aquifer (groundwater) systems. Aquifers provide springflows that sustain the streams, and the streams, in turn, recharge the aquifers.



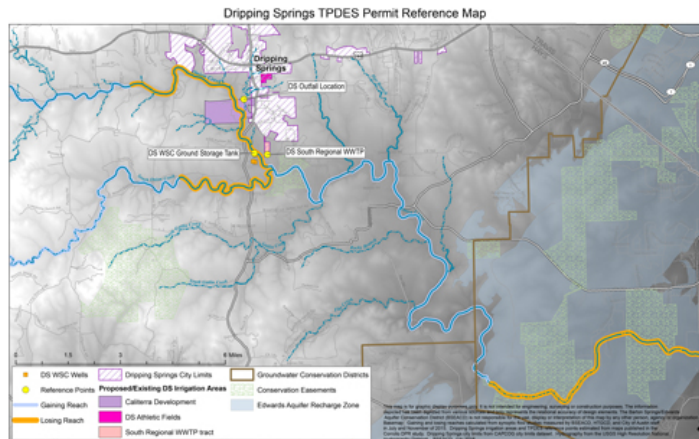
Figure 1. Map showing the generalized geology of Central Texas with the net gaining and losing reaches indicated along the Blanco River and Onion Creek. These are generalized from the studies of Smith et al., (2015) and Hunt et al. (In Press).

In summary, these studies provide strong evidence that water flowing in the Blanco River and Onion Creek are recharging the Trinity and Edwards Aquifers along certain reaches of the streams. The greatest uncertainty of these studies is how much, how quickly,

[READ MORE](#)

Dripping Springs TPDES Proposed Permit Application

Groundwater users in the District rely on the Trinity and Edwards Aquifers and Onion Creek recharges both aquifers. The proposed wastewater discharge point is upstream of Trinity Aquifer and Edwards Aquifer recharge areas, so there is potential for groundwater users to be impacted if water quality in the creek is degraded.



At the June 30, 2016 Board Meeting, the Board of Directors adopted a resolution, position statement, and summary of concerns regarding the recently proposed Dripping Springs TPDES (Wastewater) Permit Application. The District opposes the Dripping Springs TPDES Permit Application as it has been proposed.

[READ MORE](#)

Edwards Aquifer Water Levels

The highest water level recorded in the [Lovelady monitor well](#) was about 546 ft msl in June 1992. There are only 4 ft left to go to beat the record! Today's water level (542.3 msl) is 6 ft above the second highest peak, which occurred in April 2003. But, the rise in Lovelady is slowing down.

Edwards monitor wells, such as the [Hoskins Well](#), in the western portion of the District have already turned the corner and water levels have started to decline.

[READ MORE](#)

Upcoming Events, Meetings, & Deadlines

Mon., Jul. 4: **Office closed for Independence Day**
 Thurs., Jul. 21: **BSEACD Board Meeting** ([details](#))
 Mon., Aug. 1: **Permittee meter readings due** ([details](#))
 Thurs., Aug. 11: **BSEACD Board Meeting**
 Thurs., Aug. 25: **BSEACD Board Meeting**



Tweet

Share this Page: 

powered by 
