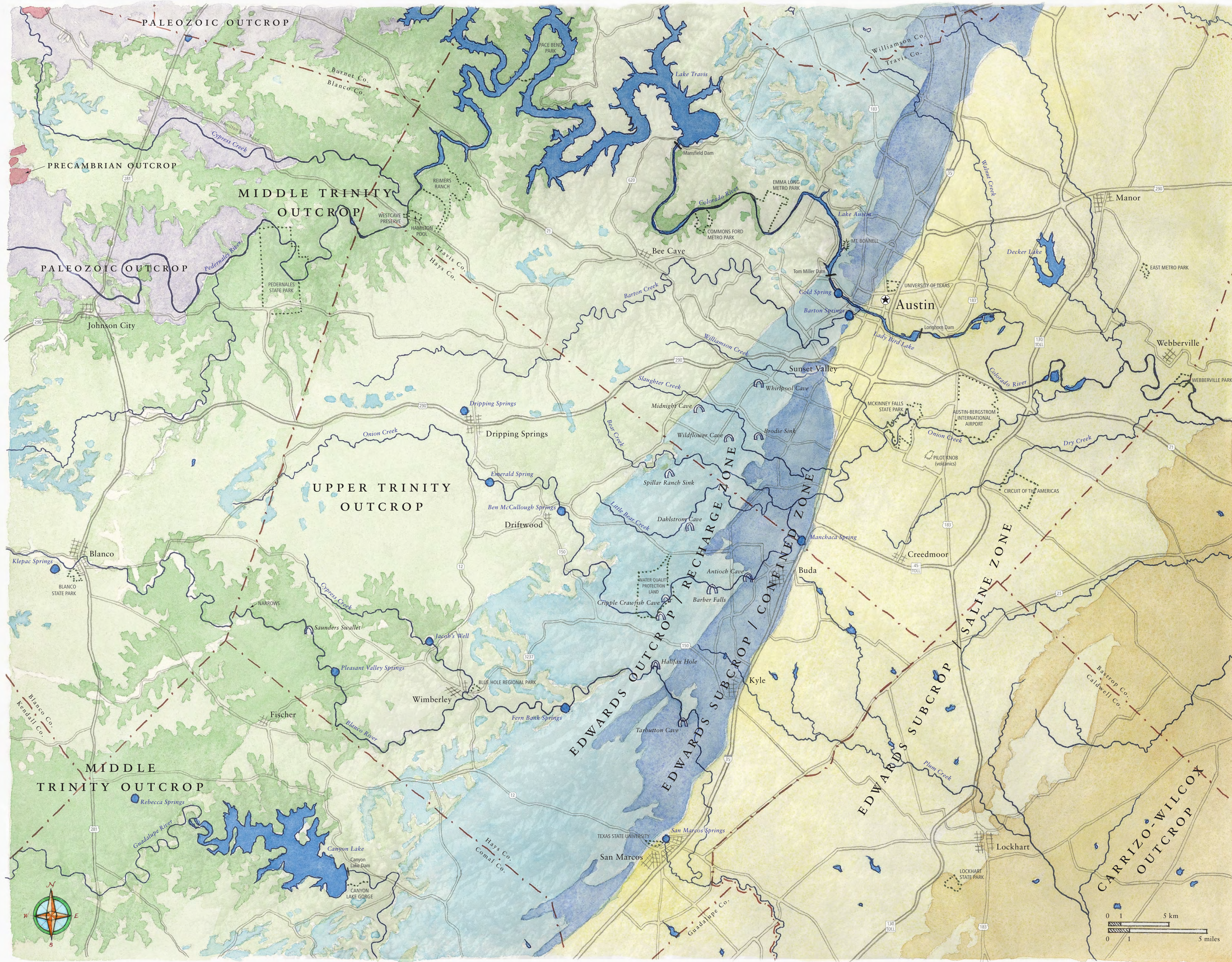
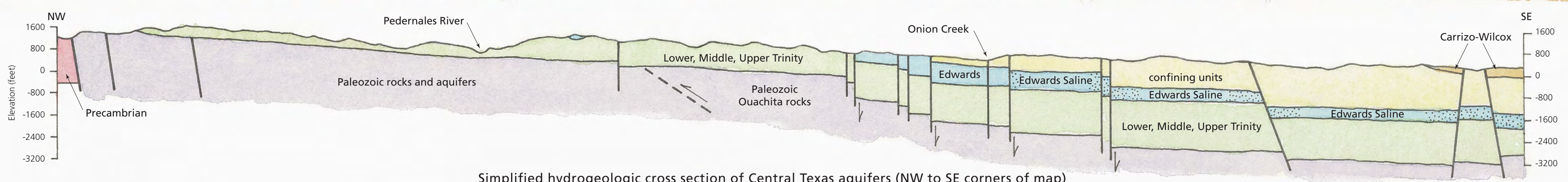
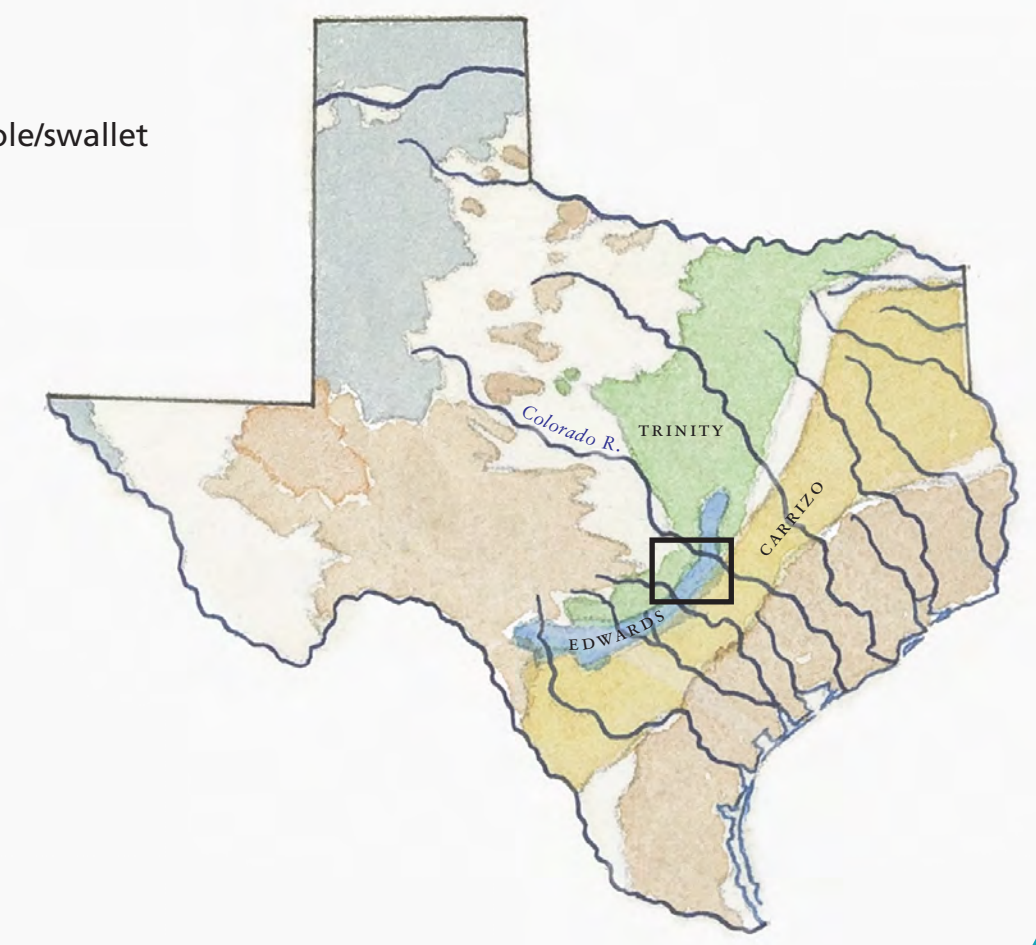


# Central Texas Water Resources



geologic age	hydrostratigraphy	group	formation	stratigraphic column & geologic features
Tertiary 65 – 2 million years ago	CARRIZO-WILCOX AQUIFER		Carrizo	
			Wilcox	
Upper Cretaceous 100 – 65 million years ago	confining units and perched aquifers		Taylor	
			Austin Chalk	
			Eagle Ford	
			Buda	
			Del Rio	
Lower Cretaceous 145 – 100 million years ago	EDWARDS AQUIFER	Edwards Group	Person Formation	
			Kainer Formation	
		Trinity Group	Walnut Fm	
			Upper Trinity AQUIFER	Glen Rose Formation
				Upper Glen Rose Mbr
			MIDDLE TRINITY AQUIFER	Lower Glen Rose Mbr
				semi-confining unit
			LOWER TRINITY AQUIFER	Hensell
				Cow Creek
				Hammett
Sligo				
Paleozoic 540 – 250 million years ago	PALEOZOIC AQUIFERS		Sycamore/Hosston	
			undifferentiated Paleozoic	
Precambrian > 540 million years ago	CRYSTALLINE ROCK AQUIFERS		undifferentiated Precambrian	

- spring
- cave/sinkhole/swallet



Simplified hydrogeologic cross section of Central Texas aquifers (NW to SE corners of map)

Credits & Citations  
 Illustration by Molly O'Halloran  
 Hydrogeologic cross section after Brune & Duffin 1983  
 Stratigraphic column after Wiernan et al. 2010  
 ©BSEACD 2017

