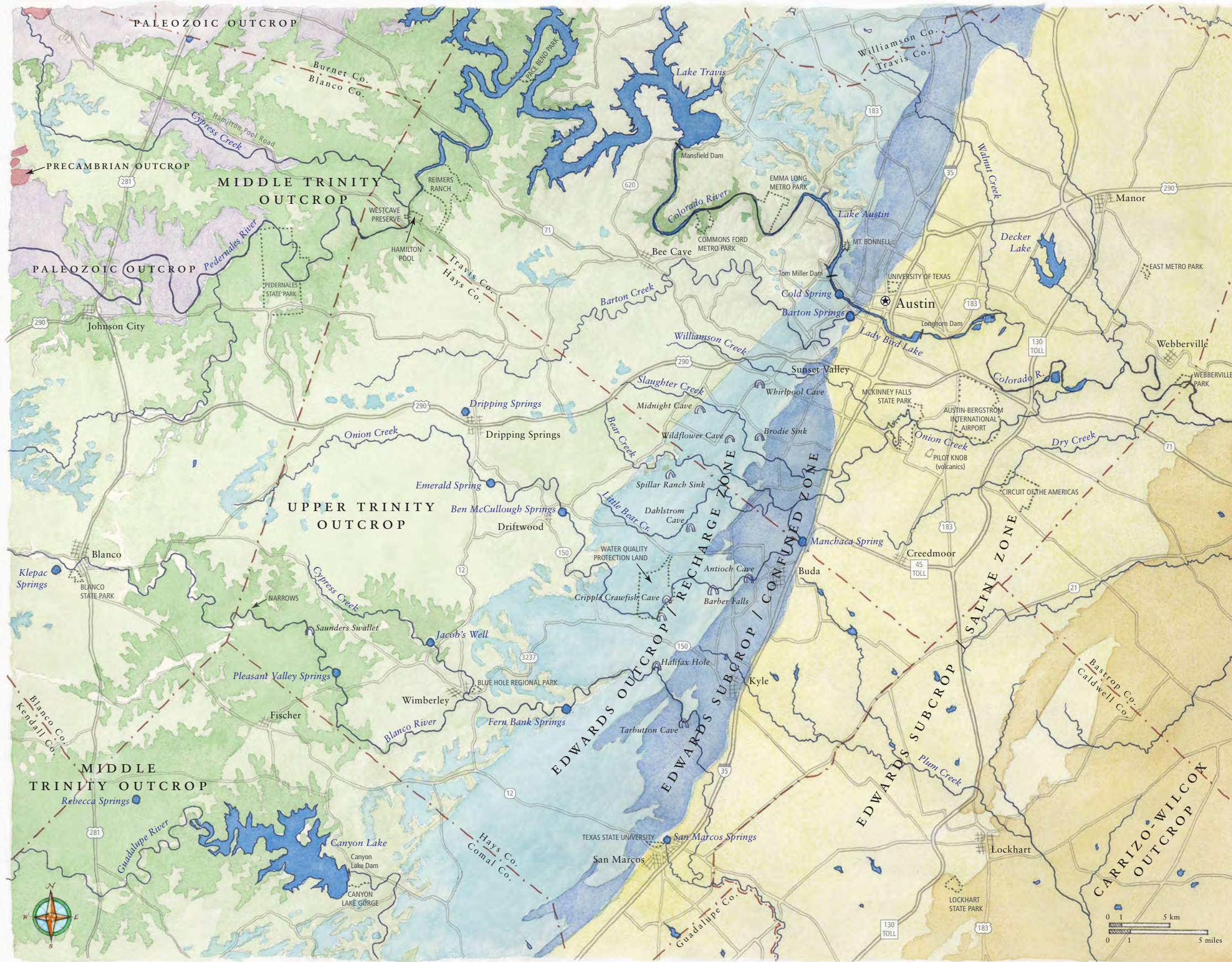
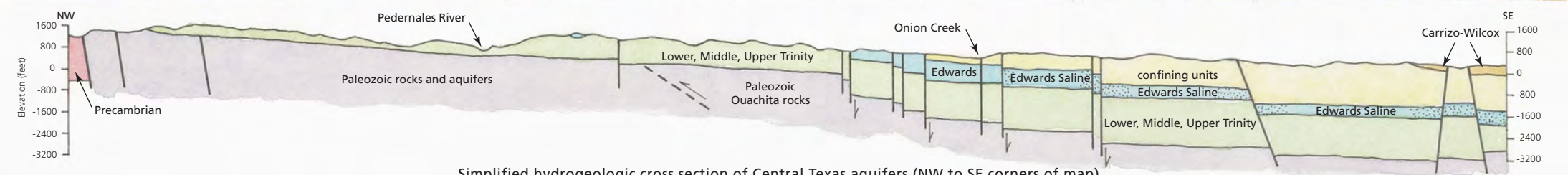


Central Texas Water Resources



geologic age	hydrostratigraphy	group	formation	stratigraphic column & geologic features
Tertiary 65 – 2 million years ago	CARRIZO-WILCOX AQUIFER		Carrizo Wilcox	
Upper Cretaceous 100 – 65 million years ago	confining units and perched aquifers		Taylor Austin Chalk Eagle Ford Buda Del Rio Georgetown	
Lower Cretaceous 145 – 100 million years ago	EDWARDS AQUIFER	Edwards Group	Person Formation Kainer Formation Walnut Fm	
		Trinity Group	Glen Rose Formation Upper Glen Rose Mbr Lower Glen Rose Mbr	
Lower Cretaceous 145 – 100 million years ago	UPPER TRINITY AQUIFER			
	MIDDLE TRINITY AQUIFER			
Lower Cretaceous 145 – 100 million years ago	semi-confining unit		Hensell	
	confining unit		Cow Creek Hammett Sligo	
Lower Cretaceous 145 – 100 million years ago	LOWER TRINITY AQUIFER		Sycamore/ Hosston	
	PALEOZOIC AQUIFERS	undifferentiated Paleozoic		
Paleozoic 540 – 250 m.y.a.	CRYSTALLINE ROCK AQUIFERS	undifferentiated Precambrian		
Precambrian > 540 million years ago				

- spring
- ⌒ cave/sinkhole/swallet



Simplified hydrogeologic cross section of Central Texas aquifers (NW to SE corners of map)

Credits & Citations
 Illustration by Molly O'Halloran
 Hydrogeologic cross section after Brune & Duffin 1983
 Stratigraphic column after Wierman et al. 2010
 ©BSEACD 2017

