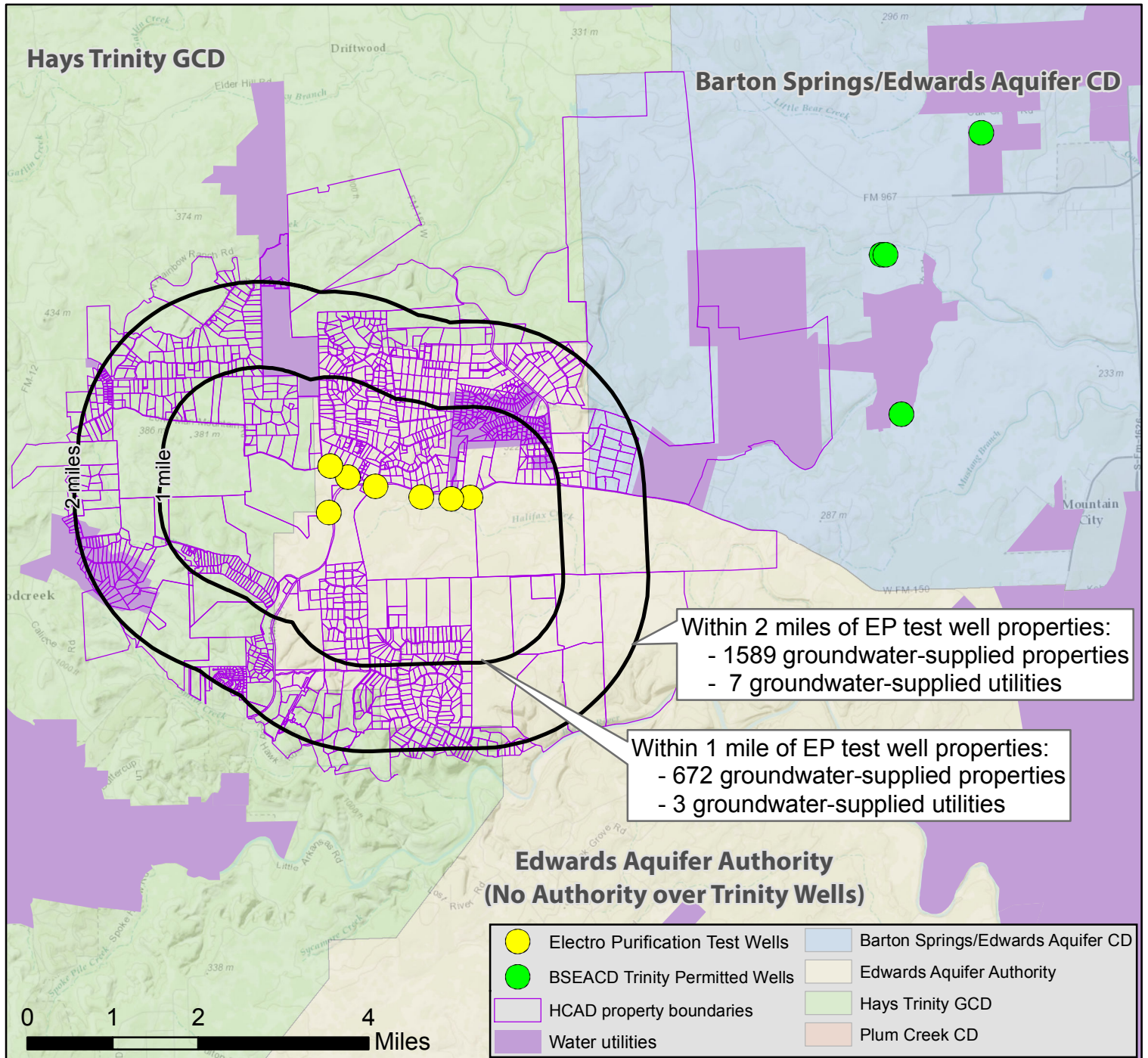


# Properties near Proposed Electro Purification Well Field



Basedata: GCD Boundaries from TCEQ, Property boundaries from Hays County Appraisal District (2014). Water utility boundaries from TCEQ (2014). Electro Purification test well locations estimated. No surface water supplied water utility serves the area surrounding the Electro Purification wells. It is assumed landowners rely on groundwater as their sole source of water.

This map is for graphic display purposes only. It is not intended for engineering, surveying or construction purposes. The information depicted has been digitized from various sources and only represents the relational accuracy of design elements. The Barton Springs/Edwards Aquifer Conservation District is not responsible for the use, display or interpretation of this map by any other person, agency or organization.

Robin H. Gary, BSEACD January, 2015