

April 28, 2016

DRAFT

**Explanatory Report for the Proposed Desired Future Conditions
of the Western Fresh Edwards (Balcones Fault Zone) Aquifer
Groundwater Management Area 10**

Table of Contents

1. Groundwater Management Area 10
2. Aquifer Description
3. Proposed Desired Future Condition
4. Policy Justification
5. Technical Justification
6. Factor Consideration
6.1. Aquifer Uses or Conditions
6.2. Water Supply Needs
6.3. Water Management Strategies
6.4. Hydrological Conditions
6.4.1. Total Estimated Recoverable Storage
6.4.2. Average Annual Recharge
6.4.3. Inflows
6.4.4 Discharge
6.4.5. Other Environmental Impacts Including Springflow and Groundwater/Surface Water Interaction
7. Subsidence Impacts
8. Socioeconomic Impacts Reasonably Expected to Occur
9. Private Property Impacts
10. Feasibility of Achieving the Desired Future Conditions
11. Discussion of other desired future conditions considered
12. Discussion of other recommendations

- 12.1 Advisory committees
- 12.2 Public comments
- 13. Any other information relevant to the specific desired future conditions
- 14. Provide a balance between the highest practicable level of groundwater production and the conservation, preservation, protection, recharging, and prevention of waste of groundwater and control of subsidence in the management area
- 15. References

List of Appendices

Appendix A – Proposed Desired Future Condition Resolution

**Appendix B – Texas Water Development Board GAM Task xxxx (Revised): Total
Estimated Recoverable Storage for Aquifers in Groundwater Management Area 10
.....**

Appendix C – Socioeconomic Impacts Analyses for Region J

List of Figures

Figure 1. Map of the administrative boundaries of Groundwater Management Area 10 and Groundwater Conservation Districts in Groundwater Management Area (From Texas Water Development Board website)

Figure 2. Discharge at Las Moras Springs (cfs) (red line) compared to water levels in the Well No. 70-38-902 (ft, mean sea level) (blue line). Spring discharge data are taken from the U.S. Geological Survey. Water elevation data are taken from the Texas Water Development Board.

List of Tables

Table 1. Desired Future Conditions for the western fresh Edwards (Balcones Fault Zone) Aquifer in Groundwater Management Area 10

Table 2. Modeled Available Groundwater for the Edwards (Balcones Fault Zone) Aquifer in Groundwater Management Area 10 in Kinney County. Results are in acre-ft/yr and designated by river basin (Kinney County Groundwater Conservation District, 2013).

Table 3. Estimated historical water use. Texas Water Development Board historical water use survey data (Allen, 2013) (acre-ft/yr).

Table 4 Projected water demands. Texas Water Development Board 2012 State Water Plan data (Allen, 2013) (acre-ft/yr).

Table 5. Projected water supply needs. Texas Water Development Board 2012 State Water Plan data (Allen, 2013) (acre-ft/yr).

Table 6. Projected water-supply shortages in Kinney County under drought –of-record conditions based on no new infrastructure development (Plateau Region Water Planning Group, 2015) (acre-ft/yr)

Table 7. Source water available after known demands are subtracted (Plateau Region Water Planning Group, 2015) (acre-ft/yr)

Table 8. Water-use categories where no water supply is available to meet its total need. These data are not currently available in the Plateau Region Water Planning Group Plan (Plateau Region Water Planning Group, 2015) (acre-ft/yr)

Table 9. Recommended and alternative water-management strategies that if implemented may assist in meeting supply shortages (Plateau Region Water Planning Group, 2015)

Table 10. Total estimated recoverable storage for the fresh-water portion of the Edwards (Balcones Fault Zone) Aquifer within Kinney County. Estimates are rounded within two significant numbers (Jones et al., 2013).

Table 11. Summarized information for the Edwards (Balcones Fault Zone) Aquifer that is needed for Kinney Count Groundwater Conservation District’s Groundwater Management Plan. All values are approximate and reported in acre-ft/yr (Hutchison et al., 2011).

Groundwater Management Area 10

Groundwater Management Areas were created by the Texas Legislature to provide for the conservation, preservation, protection, recharging, and prevention of waste of the groundwater, and of groundwater reservoirs or their subdivisions, and to control subsidence caused by withdrawal of water from those groundwater reservoirs or their subdivisions. Each Groundwater Management Area is charged with facilitating joint planning efforts in the groundwater management areas within its jurisdiction.

Groundwater Management Area 10 was created to oversee the Edwards (Balcones Fault Zone) and Trinity aquifers. Other aquifers include the Leona Gravel, Buda Limestone, Austin Chalk, and the saline Edwards (Balcones Fault Zone) aquifers. The jurisdiction of Groundwater Management Area 10 includes all or parts of Bexar, Caldwell, Comal, Guadalupe, Hays, Kinney, Medina, Travis, and Uvalde counties. Groundwater conservation districts in Groundwater Management Area 10 include Barton Springs/Edwards Aquifer Conservation District, Edwards Aquifer Authority, Kinney County Groundwater Conservation District, Medina County Groundwater Conservation District, Plum Creek Conservation District, and Uvalde County Underground Water Conservation District.

As mandated in Texas Water Code § 36.108, districts are required to submit desired future conditions of the groundwater resources in their groundwater management area to the executive administrator of the Texas Water Development Board, unless that aquifer is deemed to be non-relevant. According to Texas Water Code § 36.108 (d-3), the district representatives shall produce a Desired Future Conditions Explanatory Report for the management area and submit to the Texas Water Development Board a copy of the Explanatory Report.

The fresh-water portion of the Edwards (Balcones Fault Zone) Aquifer located within Kinney County is a major aquifer. The extent of this aquifer includes the fresh-water portion of the Edwards (Balcones Fault Zone) Aquifer located within Kinney County (Figure 1). This document is the Explanatory Report for the fresh-water portion of the Edwards (Balcones Fault Zone) Aquifer located within Kinney County.

Aquifer Description

For jurisdictional purposes, the fresh-water portion of the San Antonio segment of the Edwards (Balcones Fault Zone) Aquifer is defined as the fresh water portion of the Edwards (Balcones Fault Zone) Aquifer located within Kinney County. The boundaries of the western fresh-water Edwards (Balcones Fault Zone) Aquifer were determined using the Digital Geologic Atlas of Texas (U.S. Geological Survey, 2005; Stoesser et al., 2005) and the Groundwater Management Area 10 boundary. The geographic extent of the fresh-water portion of the Edwards (Balcones Fault Zone) Aquifer located within Kinney County is available at the Texas Water Development Board website http://www.twdb.texas.gov/groundwater/models/gam/ebfz_s/ebfz_s.asp (Figure 2). As illustrated, the jurisdiction is limited to the eastern portion of Kinney County. The western fresh-water portion of the Edwards (Balcones Fault Zone) Aquifer is located entirely within the Regional Water Planning Area J and the Kinney County Groundwater Conservation

District. The geographic extent of the western fresh-water Edwards (Balcones Fault Zone) Aquifer in the Kinney County Groundwater Conservation District is illustrated in Figures 1 and 2.

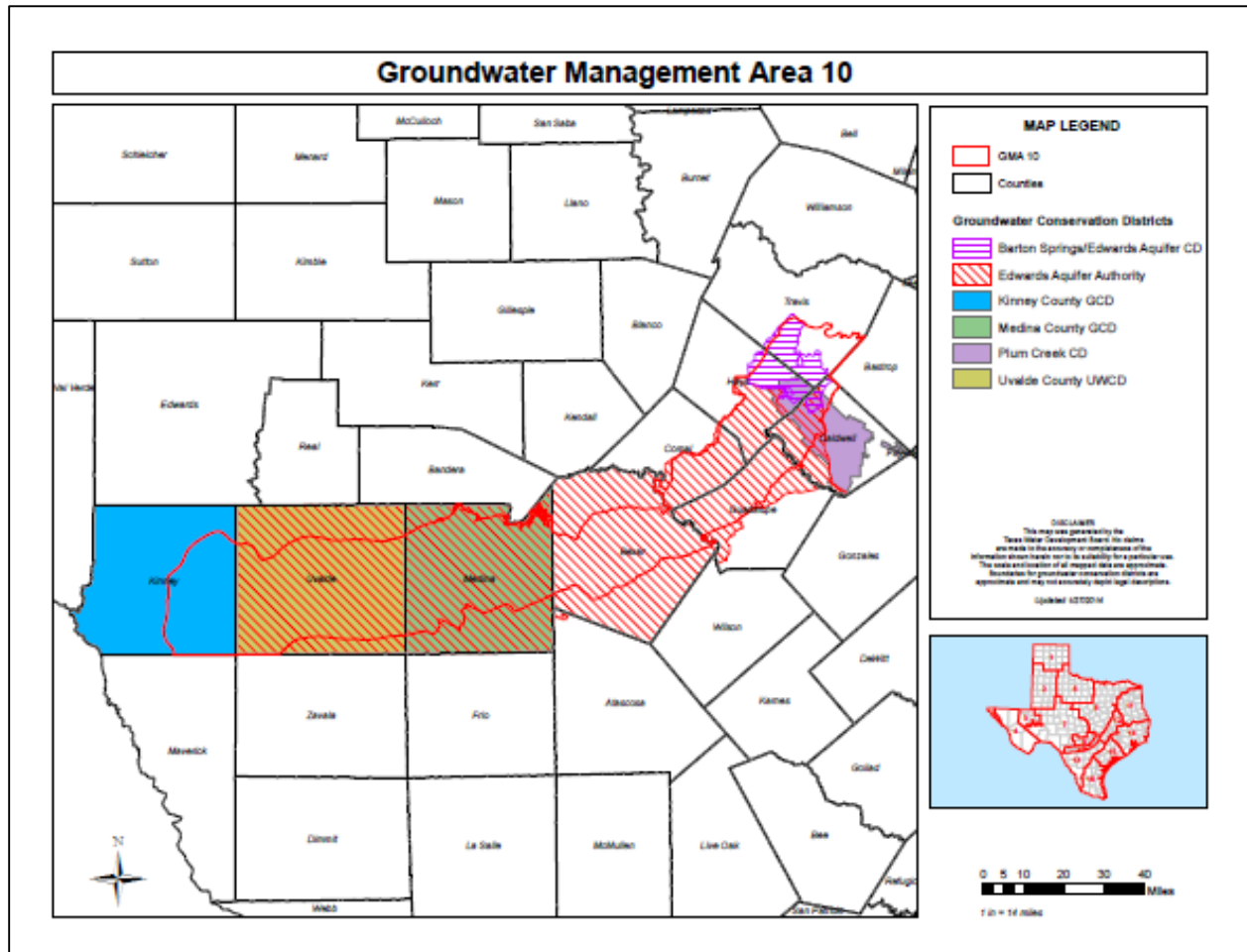


Figure 1. Map of the administrative boundaries of Groundwater Management Area 10 and Groundwater Conservation Districts in Groundwater Management Area (From Texas Water Development Board website)

Desired Future Conditions

Groundwater Management Area 10 incorporated information from the Kinney County Groundwater Conservation District Groundwater Management Plan and analyses from the Texas Water Development Board during development of the proposed Desired Future Conditions. The first cycle of the Desired Future Condition for the western fresh Edwards (Balcones Fault Zone) Aquifer in Kinney County in Groundwater Management Area 10 was that the water level in well 70-38-902 shall not fall below 1,184 ft mean sea level (Table 1). This Desired Future Condition was described in Resolution No. 2010-11 and adopted August 23, 2010 by the Groundwater Conservation Districts in Groundwater Management Area 10.

The second cycle of the Desired Future Condition for the western fresh Edwards (Balcones Fault Zone) Aquifer in Kinney County in Groundwater Management Area 10 remained the same as during the first cycle of Desired Future Conditions, that the water level in well 70-38-902 shall not fall below 1,184 ft mean sea level (Table 1). The second cycle of the Desired Future Conditions was adopted by the Groundwater Conservation Districts in Groundwater Management Area 10 on March 14, 2016 as Resolution No. 2016-xx (Appendix A).

Table 1. Desired Future Conditions for the western fresh Edwards (Balcones Fault Zone) Aquifer in Groundwater Management Area 10

Aquifer	Desired Future Condition Summary	Date Desired Future Condition Adopted
Edwards (Kinney County)	Water level in well number 70-38-902 shall not fall below 1,184 feet mean sea level	8/4/2010
Edwards (Kinney County)	Water level in well number 70-38-902 shall not fall below 1,184 feet mean sea level	?/?/2015

1.1. Policy justification

The Desired Future Condition for the San Antonio segment of the fresh-water Edwards (Balcones Fault Zone) Aquifer in Kinney County was adopted after considering factors identified in Texas Water Code §36.108 (d):

1. Aquifer uses or conditions within the management area, including conditions that differ substantially from one geographic area to another;
 - a. for each aquifer, subdivision of an aquifer, or geologic strata and
 - b. for each geographic area overlying an aquifer
2. The water supply needs and water management strategies included in the state water plan;
3. Hydrological conditions, including for each aquifer in the management area the total estimated recoverable storage as provided by the executive administrator, and the average annual recharge, inflows, and discharge;
4. Other environmental impacts, including impacts on spring flow and other interactions between groundwater and surface water;
5. The impact on subsidence;
6. Socioeconomic impacts reasonably expected to occur;
7. The impact on the interests and rights in private property, including ownership and the rights of management area landowners and their lessees and assigns in groundwater as recognized under Section 36.002;
8. The feasibility of achieving the desired future condition; and,
9. Any other information relevant to the specific desired future conditions.

These factors are discussed in detail in appropriate sections in this Explanatory Report.

1.2. Technical justification

Technical justification for selection of the Desired Future Condition for the fresh-water portion of the Edwards (Balcones Fault Zone) Aquifer in Kinney County was provided by simulations generated by a groundwater flow model developed for the Edwards (Balcones Fault Zone) Aquifer in Kinney County (Hutchison et al., 2011). The Kinney County groundwater model was developed by Hutchison et al. (2011) for use in management plan data analysis. The model was calibrated to water-level and spring discharge data collected from 1950 to 2005; however, data were extracted only for the period from 1980 to 2005 for the Kinney County Groundwater Conservation District Groundwater Management Plan (Kinney County Groundwater Conservation District Groundwater Management Plan, 2013). These dates were used to avoid skewing the data as a result of the drought of the 1950s. The period from 1980 to 2005 includes both drought and wet climatic conditions.

Kinney County has two Desired Future Conditions, one for Groundwater Management Area 7, which includes the western half of Kinney County, and one for Groundwater Management Area 10, which includes the eastern half of Kinney County. The two Desired Future Conditions for Kinney County are separate, but both were specified for the same intent, to protect flow at Las Moras Springs. Groundwater Management Area 7, which includes western Kinney County and Las Moras Springs, designated as its Desired Future Condition that drawdown for the Edwards-Trinity Aquifer in western Kinney County be consistent with maintaining flow at Las Moras Springs at an annual average flow of 23.9 cfs and a median flow of 24.4 cfs. Groundwater Management Area 10, which does not include Las Moras Springs, used the Kinney County groundwater flow model developed by Hutchison et al. (2011) to specify as its Desired Future Condition that the water level at Well No. 70-38-902 be maintained at or above an elevation of 1,184 feet msl.

These two Desired Future Conditions are essentially synonymous because Las Moras Springs discharge is well correlated with groundwater elevation at Well No. 70-38-902 (Figure 2). The Desired Future Condition of 1,184 ft msl at Well No. 70-38-902 was chosen by Groundwater Management Area 10 based on an assessment by Texas Water Development Board that correlated groundwater elevation of 1,184 ft msl at Well No. 70-38-902 to discharge of approximately 24 cfs at Las Moras Springs (Figure 3). Well No. 70-38-902 is alternatively identified as the Tularosa Well or the Tularosa Monitoring Well.

The Desired Future Conditions for Kinney County were chosen to protect Las Moras Springs. The Groundwater Management Area Desired Future Condition of an annual average flow of 23.9 cfs and a median flow of 24.4 cfs discharge from the Las Moras Springs was chosen to represent pre-development conditions when the springs did not go dry, or at least did not go dry as often as they did during the period during which the number of irrigated acres were greatest. The Groundwater Management Area 10 Desired Future Condition which specifies that the water level at Well No. 70-38-902 be maintained at or above an elevation of 1,184 ft msl was chosen for the same reasoning. The elevation of 1,184 ft msl has been determined to correlate directly with Las Moras Springs discharge rate of 24.4 cfs.

The Modeled Available Groundwater for the fresh-water portion of the Edwards (Balcones Fault Zone) Aquifer was calculated by the Texas Water Development Board (Shi et al., 2012) and provided in GAM Run 12-002 MAG (Shi, 2012). The new model run is identified as an update

of Scenario 3 of Groundwater Availability Modeling (revised) Task 10-027 (Hutchison, 2011). The model runs were based on the MODFLOW-2000 model developed by the Texas Water Development Board to assist with the joint planning process regarding the Kinney County Groundwater Conservation District (Hutchison et al., 2011). In both model runs, the total pumping in Kinney County was maintained at approximately 77,000 acre-feet per year to achieve the Desired Future Condition. The Modeled Available Groundwater for the Groundwater Management Area 10 portion of Kinney County is 6,321 acre-ft/yr (Table 2). Details regarding this model run are summarized in Shi et al. (2012).

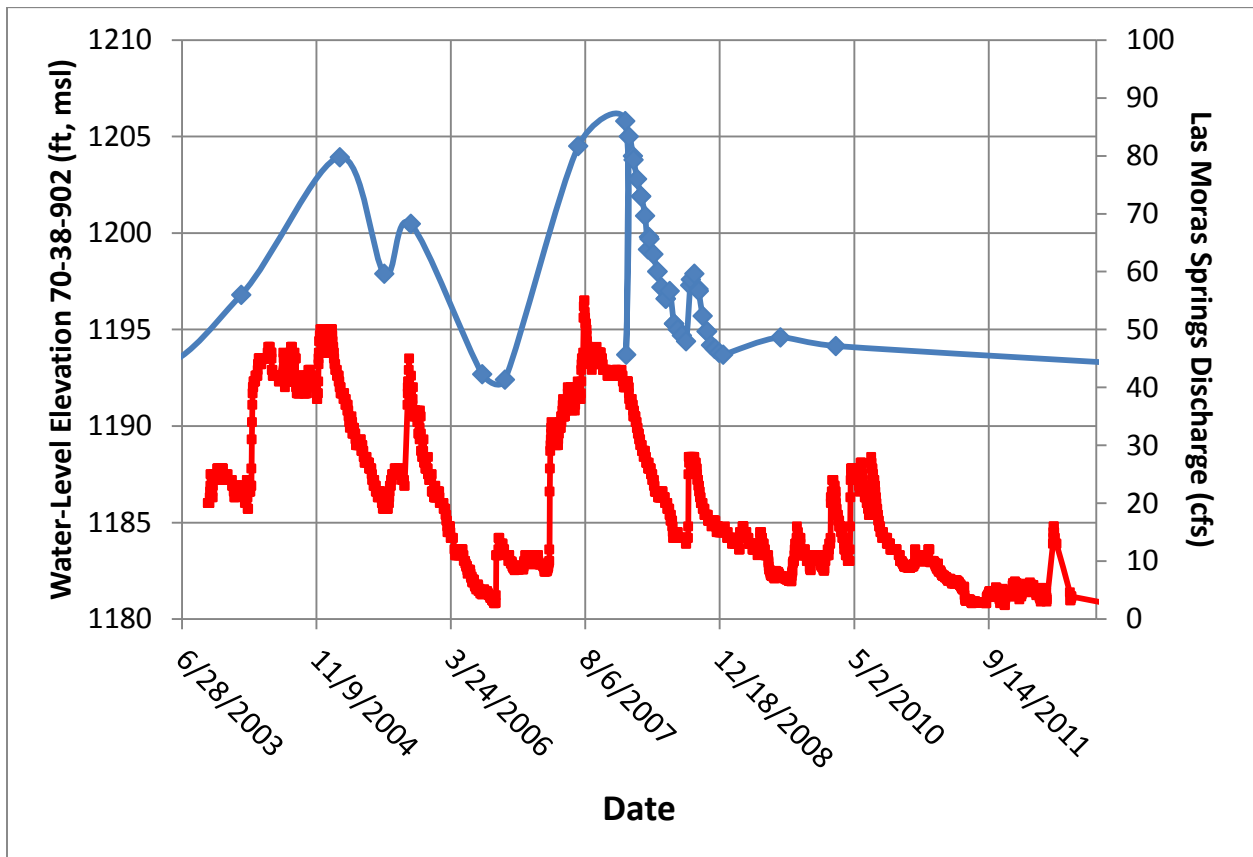


Figure 2. Discharge at Las Moras Springs (cfs) (red line) compared to water levels in the Well No. 70-38-902 (ft, mean sea level) (blue line). Spring discharge data are taken from the U.S. Geological Survey. Water elevation data are taken from the Texas Water Development Board.

Table 2. Modeled Available Groundwater for the Edwards (Balcones Fault Zone) Aquifer in Groundwater Management Area 10 in Kinney County. Results are in acre-ft/yr and designated by river basin (Kinney County Groundwater Conservation District, 2013).

River Basin	Year					
	2010	2020	2030	2040	2050	2060
Nueces	6,319	6,319	6,319	6,319	6,319	6,319
Rio Grande	2	2	2	2	2	2
Total	6,321	6,321	6,321	6,321	6,321	6,321

6. Factor Consideration

According to Texas Water Code § 36.108 (d-3), the district representatives shall produce a Desired Future Condition Explanatory Report. The report must include documentation of how factors identified in Texas Water Code §36.108 (d) were considered prior to proposing a Desired Future Condition, and how the proposed Desired Future Condition impacts each factor. The following sections of the Explanatory Report summarize the information that Kinney County Groundwater Conservation District used in its deliberations and discussions.

6.1. Aquifer Uses or Conditions

Description of Factors in the Western Fresh Edwards (Balcones Fault Zone) Aquifer in Kinney County

The information in this section was prepared by the Groundwater Technical Assistance Section of the Groundwater Resources Division at the Texas Water Development Board (Allen, 2013). This information is also included as an appendix in the Kinney County Conservation District Groundwater Management Plan (Kinney County Conservation District, 2013). Groundwater use within the Kinney County Conservation District is comprised primarily of pumpage and use from the fresh-water portion of the Edwards (Balcones Fault Zone) Aquifer with a much smaller component of pumpage coming from the Trinity Aquifer. The estimated historical surface-water and groundwater use in Kinney County for the period 2006-2007 is presented in Table 3.

Table 3. Estimated historical water use. Texas Water Development Board historical water use survey data (Allen, 2013) (acre-ft/yr).

Year	Source	Municipal	Manu- facturing	Steam Electric	Irrigation	Mining	Live- stock	Total
2006	GW	1,126	0	0	4,776	0	238	6,410
	SW	0	0	0	0	0	60	60
2007	GW	906	0	0	1,641	0	217	2,764
	SW	0	0	0	0	0	55	55
2008	GW	1,101	0	0	2,043	0	294	2,438
	SW	0	0	0	0	0	73	73
2009	GW	1,164	0	0	895	0	338	2,397
	SW	0	0	0	0	0	84	84
2010	GW	1,026	0	0	1,258	0	184	2,468
	SW	0	0	0	0	0	46	46

DFC Considerations

6.2. Water-Supply Needs

Description of Factors in the Western Fresh Edwards (Balcones Fault Zone) Aquifer in Kinney County

The information in this section was prepared by the Groundwater Technical Assistance Section of the Groundwater Resources Division at the Texas Water Development Board (Allen, 2013).

This information is also included as an appendix in the Kinney County Conservation District Groundwater Management Plan (Kinney County Conservation District, 2013). The Texas Water Development Board provides water-supply needs estimates by decade as well as by water-user group basin. There are two major basins in Kinney County; the Nueces River basin and the Rio Grande basin. Summaries of the projected water-supply demands and needs in acre-ft/yr are provided by decade in the Table 4 and 5 for each water-user group and each water-user group basin. As illustrated, the projected water-supply demands and needs are greater than the estimated historical water use for the years 2006-2010 (Table 3).

Table 4 Projected water demands. Texas Water Development Board 2012 State Water Plan data (Allen, 2013) (acre-ft/yr).

WUG	WUG Basin	2010	2020	2030	2040	2050	2060
Irrigation	Nueces	338	323	310	296	284	271
Livestock	Nueces	187	187	187	187	187	187
County-other	Nueces	35	21	13	8	4	3
Brackettville	Rio Grande	583	583	582	582	581	582
County-other	Rio Grande	32	31	31	31	31	31
Irrigation	Rio Grande	13,169	12,605	12,063	11,547	11,053	10,582
Live Stock	Rio Grande	258	258	258	258	258	258
Fort Clark Springs MUD	Rio Grande	626	653	678	704	723	727
Sum of Projected Water Demands		15,228	14,661	14,122	13,613	13,121	12,641

Table 5. Projected water supply needs. Texas Water Development Board 2012 State Water Plan data (Allen, 2013) (acre-ft/yr).

WUG	WUG Basin	2010	2020	2030	2040	2050	2060
Irrigation	Nueces	4,044	4,059	4,072	4,086	4,098	4,111
Livestock	Nueces	147	147	147	147	147	147
County-other	Nueces	13	27	35	40	44	45
Brackettville	Rio Grande	64	64	65	65	66	65
County-other	Rio Grande	56	57	57	57	57	57
Irrigation	Rio Grande	12,615	13,179	13,721	14,237	14,731	15,202
Livestock	Rio Grande	83	83	83	83	83	83
Fort Clark Springs Mud	Rio Grande	494	467	442	416	397	393
Sum of Projected Water Supply Needs		17,516	18,083	18,622	19,131	19,623	20,103

DFC Considerations

6.3. Water-Management Strategies

Description of Factors in the Western Fresh Edwards (Balcones Fault Zone) Aquifer in Kinney County

The following information is from the Plateau Region Initially Prepared Water Plan (Plateau Region Water Planning Group, 2015). A major component of the Plateau Region Initially Prepared Water Plan is to identify municipalities and water-use categories that may, in times of

severe drought, be unable to meet expected water-supply needs based on today’s ability to access, treat, and distribute the supply. A goal of the Plateau Region Initially Prepared Water Plan is to provide for the health, safety, and welfare of the human community, with as little detrimental effect to the environment as possible. Recreation activities involve human interaction with the outdoor environment and are often directly dependent on water resources. It is recognized that the maintenance of the regional environmental community’s water supply needs serves to enhance the lives of citizens of the Plateau Region as well as the tens of thousands of annual visitors to this Region. The implementation of water-management strategies recommended in the Plateau Region Initially Prepared Water Plan is not expected to have any impact on native-water quality. In particular, primary and secondary safe drinking water standards, which are the key parameters of water quality identified by the Plateau Region Water Planning Group as important to the use of the water resource, are not compromised by the implementation of the strategies. Also, no recommended strategies involve moving water from a rural location for use in an urban area.

The data presented in this section are provided by the Plateau Region Water Planning Group Plan (Plateau Region Water Planning Group, 2015). Recommended alternatives, or water-management strategies, to meet anticipated drought-induced shortages are presented in the Plateau Region Initially Prepared Water Plan for consideration. Table 6 lists the projected water supply shortages in Kinney County under drought-of-record conditions based on no new infrastructure development. Table 7 lists source water available after known demands are subtracted. Table 8 identifies water-use categories where no water supply is available to meet its total need. As noted, these data are not currently available in the Plateau Region Water Planning Group Plan. Table 9 provides a listing of all recommended and alternative water management strategies in the Plateau Region Water Planning Group Plan that if implemented may assist in meeting supply shortages.

Table 6. Projected water-supply shortages in Kinney County under drought –of-record conditions based on no new infrastructure development (Plateau Region Water Planning Group, 2015) (acre-ft/yr)

WUG/WWP	Basin	2020	2030	2040	2050	2060	2070
Livestock	Rio Grande	22	22	22	22	22	22

Table 7. Source water available after known demands are subtracted (Plateau Region Water Planning Group, 2015) (acre-ft/yr)

Groundwater	Basin	Salinity	2020	2030	2040	2050	2060	2070
Austin Chalk Aquifer	Rio Grande	Brackish	4,045	4,045	4,045	4,045	4,045	4,045
Edwards (Balcones Fault Zone) Aquifer	Nueces	Fresh	3,434	3,434	3,434	3,434	3,434	3,434
Edwards (Balcones Fault Zone)	Rio Grande	Fresh	2	2	2	2	2	2

Aquifer								
---------	--	--	--	--	--	--	--	--

Table 8. Water-use categories where no water supply is available to meet its total need. These data are not currently available in the Plateau Region Water Planning Group Plan (Plateau Region Water Planning Group, 2015) (acre-ft/yr)

WUG/WWP	Basin	2020	2030	2040	2050	2060	2070
-	-	-	-	-	-	-	-

Table 9. Recommended and alternative water-management strategies that if implemented may assist in meeting supply shortages (Plateau Region Water Planning Group, 2015)

WUG	Water Management Strategy	Strategy Supply (acre-ft/yr)						Total Capital Cost
		2020	2030	2040	2050	2060	2070	
City of Brackettville	Conservation: Water loss audit and main-line repair	58	58	58	58	58	58	\$1,116
	Increase supply to Spoford with new water line	3	3	3	3	3	3	\$751,000
	Increase storage facility	3	3	3	3	3	3	\$288,000
Ft Clark Springs MUD	Increase storage facility	620	620	620	620	620	620	\$1,033,000
Kinney County Other	Conservation: Vegetative management _ <i>Arundo donax</i>	145	145	145	145	145	145	\$0
Kinney County Livestock	Additional water wells	20	20	20	20	20	20	\$55,000

DFC Considerations

6.4. Hydrological Conditions

Description of Factors in the Western Fresh Edwards (Balcones Fault Zone) Aquifer in Kinney County

6.4.1. Total Estimated Recoverable Storage

Texas statute requires that the total estimated recoverable storage of relevant aquifers be determined. Total estimated recoverable storage is a calculation provided by the Texas Water Development Board. Texas Administrative Code Rule §356.10 (Texas Administrative Code, 2011) defines the total estimated recoverable storage as the estimated amount of groundwater within an aquifer that accounts for recovery scenarios that range between 25 percent and 75 percent of the porosity-adjusted aquifer volume. As described in GAM Task 13-033 (Jones et al.,

2013), the total recoverable storage estimated for the Edwards (Balcones Fault Zone) Aquifer within the Kinney County Groundwater Conservation District in Groundwater Management Area 10 is listed in Table 10. Total estimated recoverable storage values may include a mixture of water-quality types, including fresh, brackish, and saline groundwater, because the available data and the existing Groundwater Availability Models do not permit the differentiation between different water-quality types. The total estimated recoverable storage values do not take into account the effects of land surface subsidence, degradation of water quality, or any changes to surface-water/groundwater interaction that may occur due to pumping.

Table 10. Total estimated recoverable storage for the fresh-water portion of the Edwards (Balcones Fault Zone) Aquifer within Kinney County. Estimates are rounded within two significant numbers (Jones et al., 2013).

Total Storage (acre-ft)	25 percent of Total Storage (acre-ft)	75 percent of Total Storage (acre-ft)
3,100,000	775,000	2,325,000

6.4.2. Average Annual Recharge

Shi and Wade (2013) calculated the average annual recharge of the Edwards (Balcones Fault Zone) Aquifer in Kinney County using the Kinney County alternative Groundwater Availability Model (Hutchison et al., 2011). The alternative Groundwater Availability Model encompassed all of Kinney County, thus the analysis included both Groundwater Management Areas 7 and 10 in Kinney County. As presented in Table 11, recharge to the Edwards (Balcones Fault Zone) Aquifer in Kinney County was calculated to be 17,674 acre-ft/yr.

Table 11. Summarized information for the Edwards (Balcones Fault Zone) Aquifer that is needed for Kinney County Groundwater Conservation District's Groundwater Management Plan. All values are approximate and reported in acre-ft/yr (Hutchison et al., 2011).

Management Plan requirement	Aquifer and other units	TWDB Kinney GCD Model (1980 – 2005)
Estimated annual amount of recharge from precipitation to the district	Edwards (Balcones Fault Zone) Aquifer	17,674
Estimated annual volume of water that discharges from the aquifer to springs and any surface water body including lakes, streams, and rivers	Edwards (Balcones Fault Zone) Aquifer	514
Estimated annual volume of flow into the district within each aquifer in the district	Edwards (Balcones Fault Zone) Aquifer	268
Estimated annual volume of flow out of the district within each aquifer in the district	Edwards (Balcones Fault Zone) Aquifer	12,346
Estimated net annual volume of flow between each aquifer	From Upper Cretaceous Units to Edwards (Balcones Fault	15,597

in the district	Zone) Aquifer	
	From Edwards-Trinity (Plateau) Aquifer to Edwards (Balcones Fault Zone) Aquifer	11,514
	From Edwards (Balcones Fault Zone) Aquifer to Edwards-Trinity Units	33,598

6.4.3. Inflows

Shi and Wade (2013) calculated inflows to the Edwards (Balcones Fault Zone) Aquifer in Kinney County using the Kinney County alternative Groundwater Availability Model (Hutchison et al., 2011). The alternative Groundwater Availability Model encompassed all of Kinney County, thus the analysis included both Groundwater Management Areas 7 and 10 in Kinney County. As presented in Table 5, inflows to the Edwards (Balcones Fault Zone) Aquifer in Kinney County were calculated to be 268 acre-ft/yr.

6.4.4 Discharge

Shi and Wade (2013) calculated inflows to the Edwards (Balcones Fault Zone) Aquifer in Kinney County using the Kinney County alternative Groundwater Availability Model (Hutchison et al., 2011). The alternative Groundwater Availability Model encompassed all of Kinney County, thus the analysis included both Groundwater Management Areas 7 and 10 in Kinney County. As presented in Table 5, the estimated annual volume of water that discharges from the aquifer to springs and any surface water body including lakes, streams, and rivers from the Edwards (Balcones Fault Zone) Aquifer in Kinney County was calculated to be 514 acre-ft/yr. the estimated annual volume of flow out of the district within each aquifer in the district from the Edwards (Balcones Fault Zone) Aquifer in Kinney County was calculated to be 12,346 acre-ft/yr.

6.4.5. Other Environmental Impacts Including Springflow and Groundwater/Surface-Water Interaction

Shi and Wade (2013) calculated inflows to the Edwards (Balcones Fault Zone) Aquifer in Kinney County using the Kinney County alternative Groundwater Availability Model (Hutchison et al., 2011). The alternative Groundwater Availability Model encompassed all of Kinney County, thus the analysis included both Groundwater Management Areas 7 and 10 in Kinney County. As presented in Table 5, the net annual volume of flow between each aquifer in the district the Edwards (Balcones Fault Zone) Aquifer in Kinney County was calculated to be: (i) 15,597 acre-ft/yr from Upper Cretaceous Units to Edwards (Balcones Fault Zone) Aquifer; (ii) 11,514 acre-ft/yr from Edwards-Trinity (Plateau) Aquifer to Edwards (Balcones Fault Zone) Aquifer; and (iii) 33,598 acre-ft/yr from Edwards (Balcones Fault Zone) Aquifer to Edwards-Trinity Units.

DFC Considerations

7. Subsidence Impacts

Subsidence has historically not been an issue with the Edwards (Balcones Fault Zone) Aquifer in Kinney County in Groundwater Management Area 10.

8. Socioeconomic Impacts Reasonably Expected to Occur

Description of Factors in the Western Fresh Edwards (Balcones Fault Zone) Aquifer in Kinney County

Administrative rules require that regional water planning groups evaluate the impacts of not meeting water needs as part of the regional water planning process, and rules direct Texas Water Development Board staff to provide technical assistance [§357.7 (4)(A)]. Staff of the Texas Water Development Board's Water Resources Planning Division designed and conducted a report in support of the Plateau Region Water Planning Group (Region J). The report "Socioeconomic Impacts of Projected Water Shortages for the Plateau Region Water Planning Area (Region J)" was prepared by the Texas Water Development Board in support of the 2011 Plateau Region Water Plan.

The report on socioeconomic impacts summarizes the results of the Texas Water Development Board analysis and discusses the methodology used to generate the results for Region J. The socioeconomic impact report for Water Planning Group L is included in Appendix C.

DFC Considerations

9. Private Property Impacts

Description of Factors in the Western Fresh Edwards (Balcones Fault Zone) Aquifer in Kinney County

The impact on the interests and rights in private property, including ownership and the rights of Groundwater Management Area landowners and their lessees and assigns in groundwater is recognized under Texas Water Code Section 36.002. The legislature recognizes that a landowner owns the groundwater below the surface of the landowner's land as real property. Nothing in this code shall be construed as granting the authority to deprive or divest a landowner, including a landowner's lessees, heirs, or assigns, of the groundwater ownership and rights described by this section.

Texas Water Code Section 36.002 does not: (1) prohibit a district from limiting or prohibiting the drilling of a well by a landowner for failure or inability to comply with minimum well spacing or tract size requirements adopted by the district; (2) affect the ability of a district to regulate groundwater production as authorized under Section 36.113, 36.116, or 36.122 or otherwise under this chapter or a special law governing a district; or (3) require that a rule adopted by a district allocate to each landowner a proportionate share of available groundwater for production from the aquifer based on the number of acres owned by the landowner.

DFC Considerations

10. Feasibility of Achieving the Desired Future Conditions

The feasibility of achieving a Desired Future Condition directly relates to the ability of the Kinney County Groundwater Conservation District and Groundwater Management Area 10 to manage the fresh-water portion of the Edwards (Balcones Fault Zone) Aquifer in Kinney County to achieve the Desired Future Conditions. The feasibility of achieving this goal is limited by the finite nature of the resource and how it responds to drought and the pressures placed on this resource by economic and population growth within the area served by this resource and the potential that water is exported out of the Kinney County Groundwater Conservation District. Texas State law provides Groundwater Conservation Districts and Groundwater Management Areas with the responsibility and authority to conserve, preserve, and protect these resources and to insure for the recharge and prevention of waste of groundwater and control of subsidence in the management area. The feasibility of achieving these goals could be altered if state law is revised or interpreted differently than is currently the case.

11. Discussion of Other Desired Future Conditions Considered

No other Desired Future Condition of the western fresh Edwards (Balcones Fault Zone) Aquifer was considered.

12. Discussion of Other Recommendations

12.1 Advisory Committees

An Advisory Committee for Groundwater Management Area 10 has not been established.

12.2 Public Comments

Each Groundwater Conservation District must hold a public meeting within 90 days after the Groundwater Management Area approves its Desired Future Conditions. During this meeting, the Groundwater Conservation District needs to document stakeholder input. This input is to be submitted by a report from the Groundwater Conservation District to the Groundwater Management Area within 90 days after the Groundwater Management Area approves its Desired Future Condition.

The Kinney County Groundwater Management District has not yet approved its Desired Future Conditions. The Kinney County Groundwater Conservation District has not yet held public meetings to gather public comment on the Desired Future Conditions. No public comments have yet been offered regarding the Desired Future Condition for the fresh-water portion of the Edwards (Balcones Fault Zone) Aquifer in Kinney County.

A draft of the Explanatory Report may be used as supporting documents to inform the public before such hearings and meetings are held.

13. Any other information relevant to the specific desired future conditions.

No additional information relevant to the specific desired future conditions has been identified.

14. Provide a balance between the highest practicable level of groundwater production and the conservation, preservation, protection, recharging, and prevention of waste of groundwater and control of subsidence in the management area.

Texas Water Development Board has not developed guidance on how to approach this factor. It is up to the wishes of the Groundwater Conservation Districts on how they wish to approach it, whether in a qualitative, quantitative, or combination manner. But, the Groundwater Conservation Districts need to include stakeholder input so that this factor can be satisfactorily addressed. Participation by the project team at town hall meetings or with individual Groundwater Conservation Districts is not included in the scope of this work. Groundwater Conservation District management plans will be used to complete this requirement.

Each Groundwater Conservation District must hold a public meeting within 90 days after the Groundwater Management Area approves its Desired Future Conditions. During this meeting, the Groundwater Conservation District needs to document stakeholder input regarding whether the Desired Future Conditions provide a balance between the highest practicable level of groundwater production and the conservation, preservation, protection, recharging, and prevention of waste of groundwater and control of subsidence in the management area. This input is to be submitted by a report from the Groundwater Conservation District to the Groundwater Management Area within 90 days after the Groundwater Management Area approves its Desired Future Conditions.

References

- Allen, S. 2013. Estimated historical water use and 2012 State Water Plan datasets: Kinney County Groundwater Conservation District. Texas Water Development Board. Groundwater Resources Division. Groundwater Technical Assistance Section.
- Hutchison, W.R. 2011. GAM Task 10-027 (revised): Texas Water Development Board, GAM Task 10-027 Report. 8 p.
- Hutchison, W.R., J. Shi, and M. Jigmond. 2011. Groundwater Flow Model of the Kinney County Area, Texas Water Development Board. 138 p.
- Jones, I.C., J. Shi, and R. Bradley. 2013. GAM Task 13-033: Total estimated recoverable storage for aquifers in Groundwater Management Area 10.
- Kinney County Groundwater Conservation District. 2013. Kinney County Groundwater Conservation District Groundwater Management Plan.
- Plateau Region Water Planning Group. 2015. Plateau Region Initially Prepared Water Plan.
- Shi, J. 2012. GAM Task Report 12-002: Modeled Available Groundwater in Kinney County (July 24, 2012).
- Shi, J., C. Ridgeway, and L. French. 2012. Draft GAM Task Report 12-002: Modeled Available Groundwater in Kinney County (April 11, 2012).
- Shi, J. and S. Wade. 2013. GAM Run 12-014: Kinney County Groundwater Conservation District Management Plan. 11 p.
- Stoeser, D.B., N. Shock, G.N. Green, G.M. Dumonceaux, and W.D. Heran. 2005. A Digital Geologic Map Database for the State of Texas: U.S. Geological Survey Data Series 170.
- U.S. Geological Survey. 2005. Preliminary integrated geologic map databases for the United States: Central states: Montana, Wyoming, Colorado, New Mexico, North Dakota, South Dakota, Nebraska, Kansas, Oklahoma, Texas, Iowa, Missouri, Arkansas, and Louisiana. GS Open-File Report 2005-1351. <http://pubs.usgs.gov/of/2005/1351/> .