

Drought Status Chart

Barton Springs/ Edwards Aquifer Conservation District

Drought Stage II Alarm

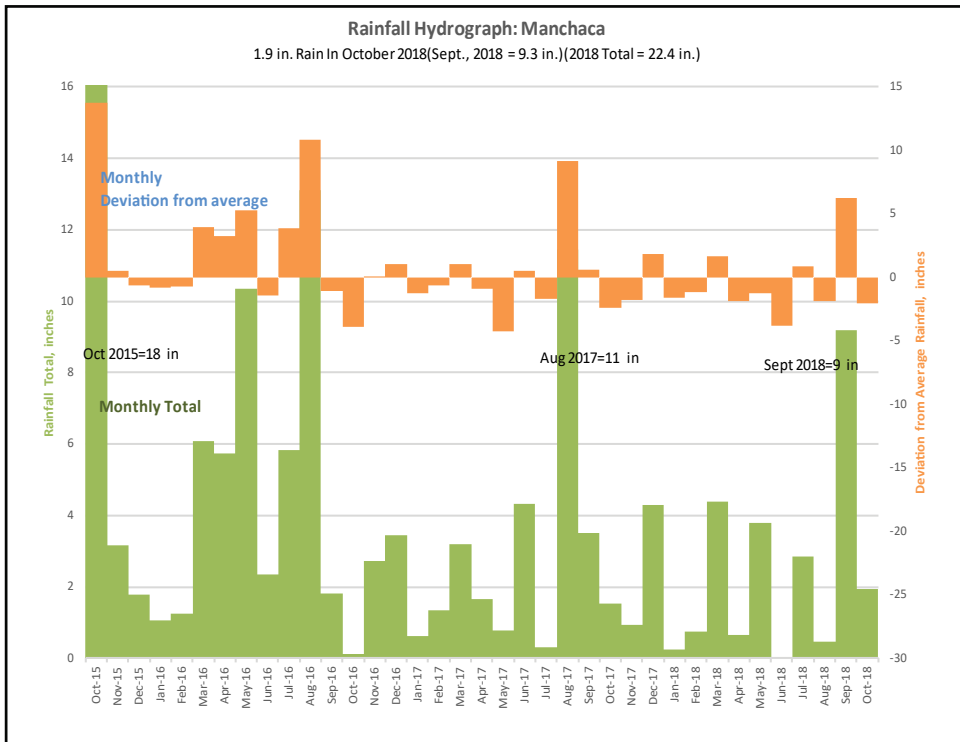
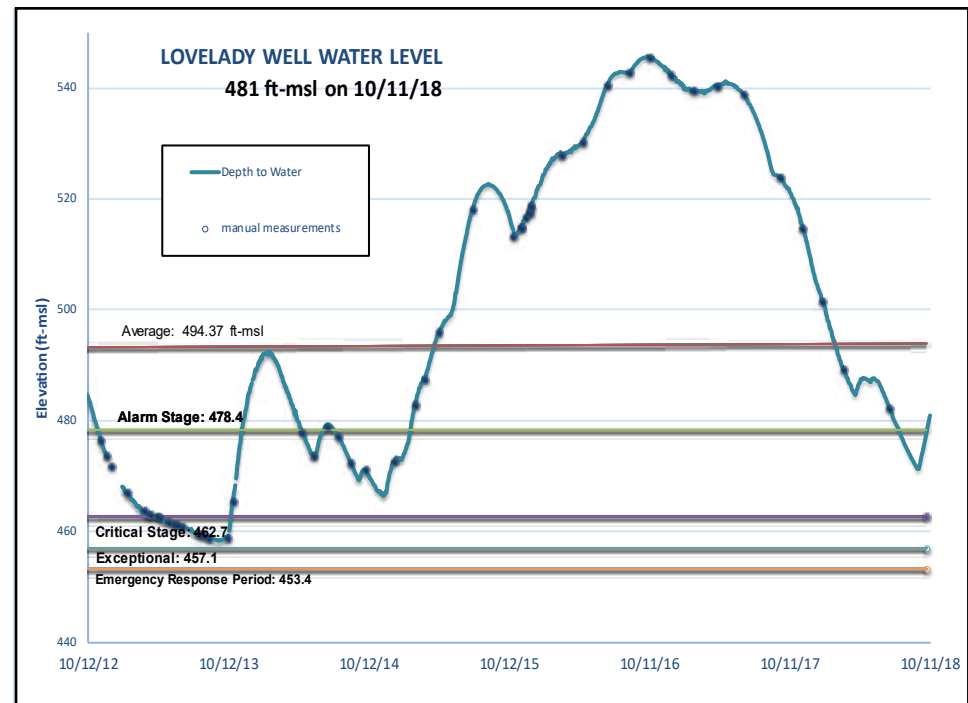
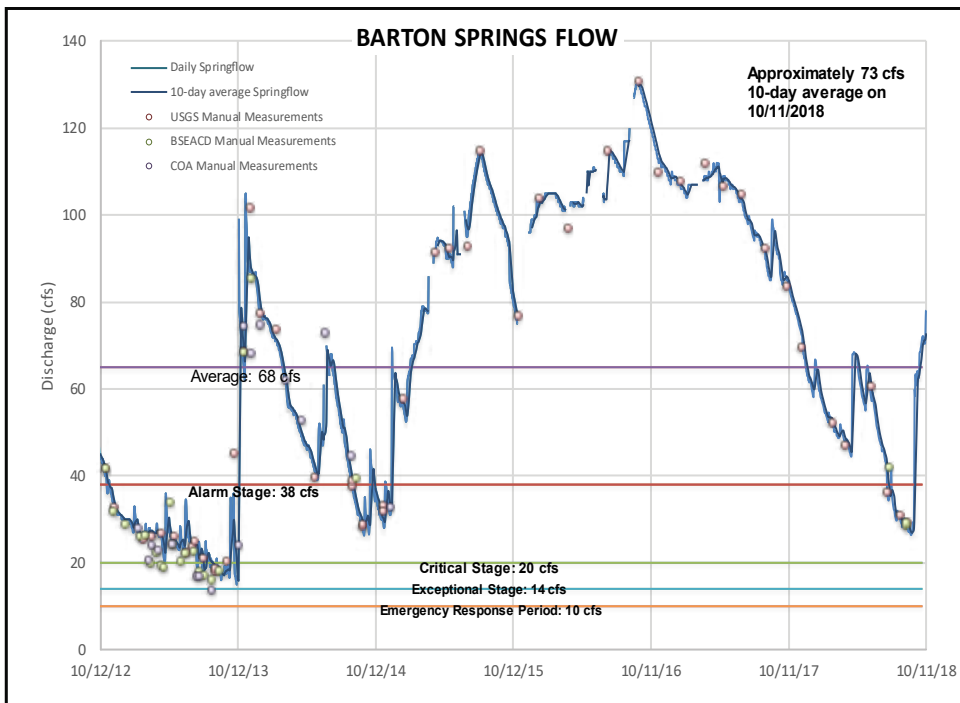
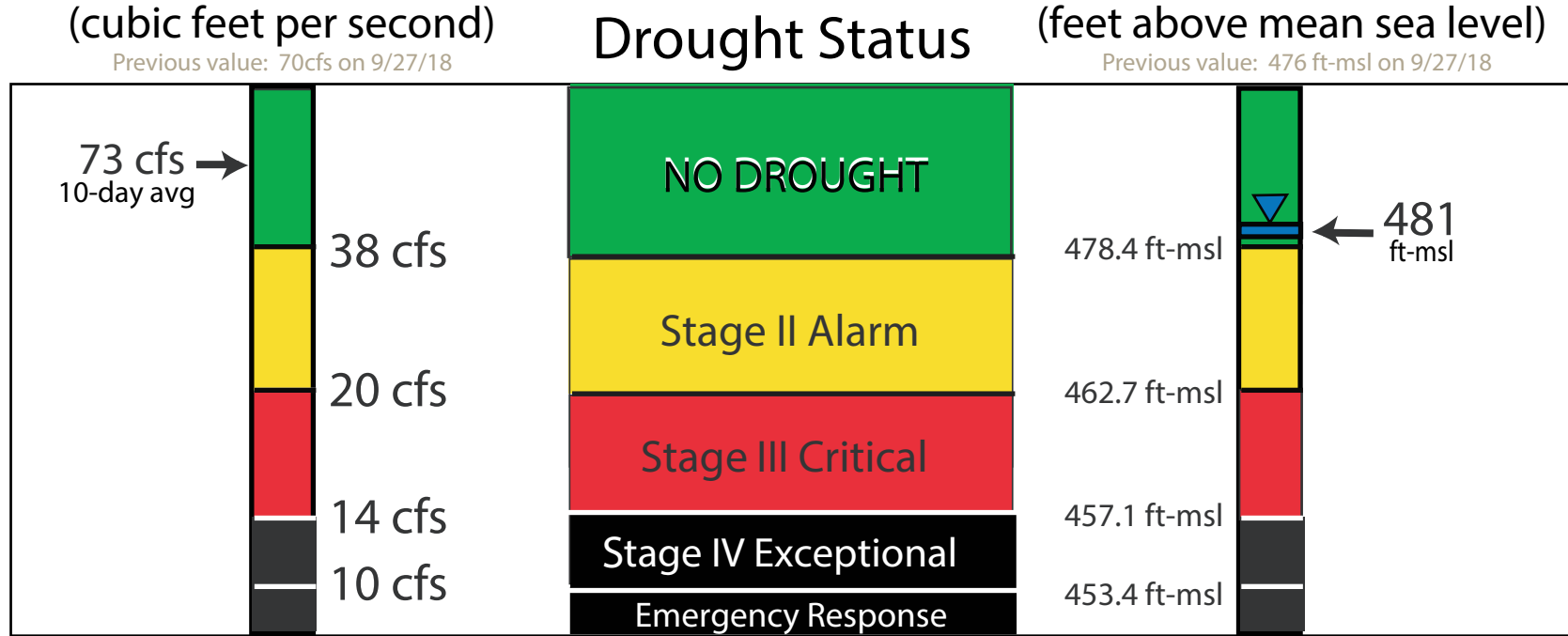


Barton Springs Discharge
(cubic feet per second)
Previous value: 70cfs on 9/27/18



Lovelady Well Water Level Elevation
(feet above mean sea level)
Previous value: 476 ft-msl on 9/27/18

October 11, 2018



U.S. Drought Monitor Texas

October 9, 2018 (Revised Thursday, Oct. 11, 2018) V043 9 am EDT

Legend: No Drought, Stage I Drought, Stage II Drought, Stage III Drought, Stage IV Drought, Exceptional Drought

The BSEACD drought outlook valid from September 27, 2018, to October 11, 2018 has been declared "No Drought" effective immediately. While rainfall totals across central Texas varied significantly in September and October, areas in the contributing and recharge zones received enough rain to saturate soils and allow runoff to generate stream flow in the recharge zone creeks. One of the area's two groundwater drought indicators, Barton Springs discharge, has been above the Stage II Alarm Drought threshold since September 9, 2018. On Friday, October 5, 2018 the water level in the Lovelady Well crossed above its drought threshold. Both indicators need to be above their designated thresholds – and currently are – to emerge from drought.

The District declared a groundwater drought and has been enforcing mandatory water-use restrictions since July 2018. Sustained creekflow in the recharge zone creeks has generated substantial recharge to the aquifer. Water levels are still below average, but with additional rainfall they could continue to rise. Groundwater users are encouraged to maintain conservation practices, but mandatory pumping curtailments are lifted.

U.S. Drought Monitor

October 9, 2018 (Revised Thursday, Oct. 11, 2018) V043 9 am EDT

Legend: No Drought, Stage I Drought, Stage II Drought, Stage III Drought, Stage IV Drought, Exceptional Drought

From Bob Rose, Chief Meteorologist, LCRA: It has been a very wet start to the week across the Hill Country and Central Texas. The combination of a slow-moving trough of low pressure, abundant Gulf moisture and an eastward-moving Pacific cold front helped produce widespread heavy, to in some cases excessive rains, across much of the region.